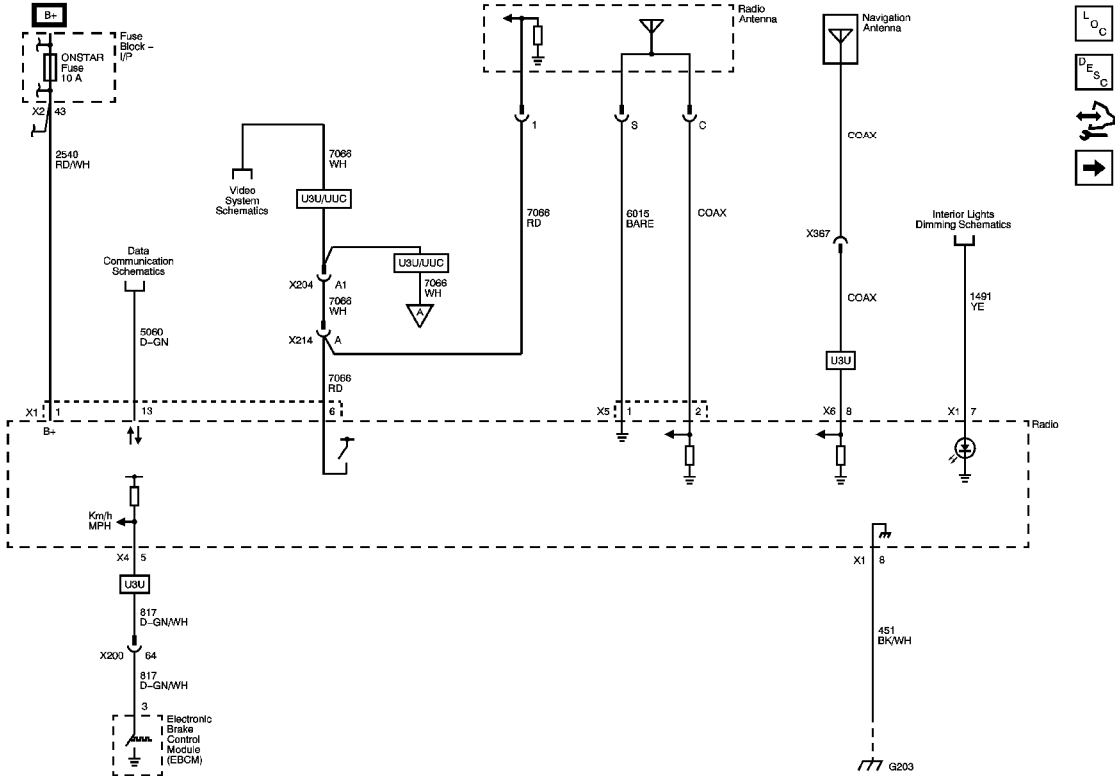


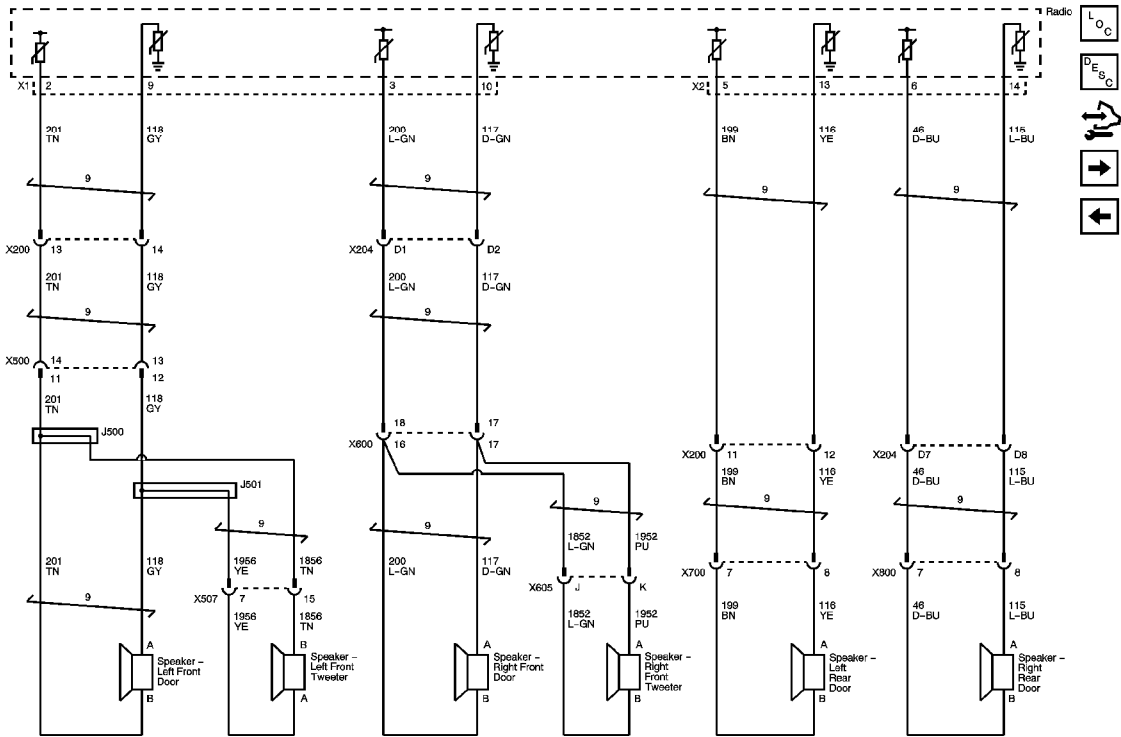
# Fastener Tightening Specifications

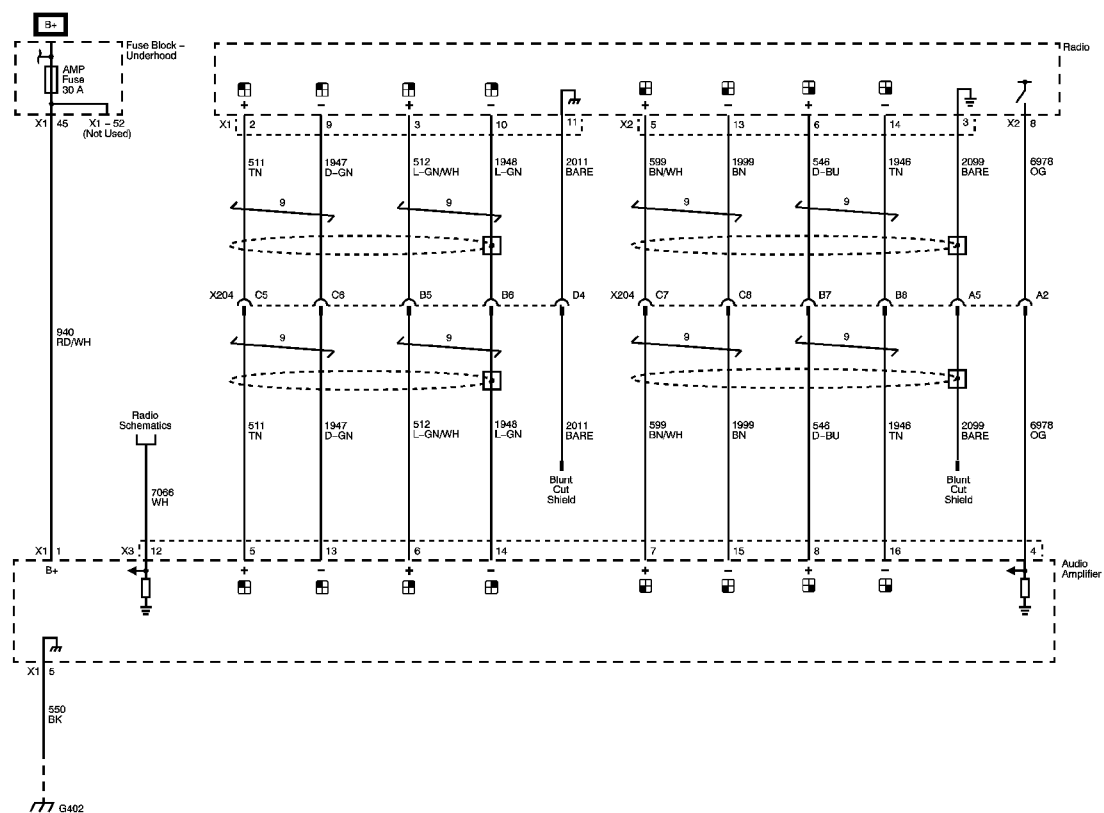
Application	Specification	
	Metric	English
Antenna Bracket Fastener	10 N·m	89 lb in
Antenna Mast	10 N·m	89 lb in
Communication Interface Module Bolt	3 N·m	27 lb in
Front Speaker Screw	2.5 N·m	22 lb in
Radio Screw	2.5 N·m	22 lb in
Rear Speaker Screw	2.5 N·m	22 lb in

# Radio

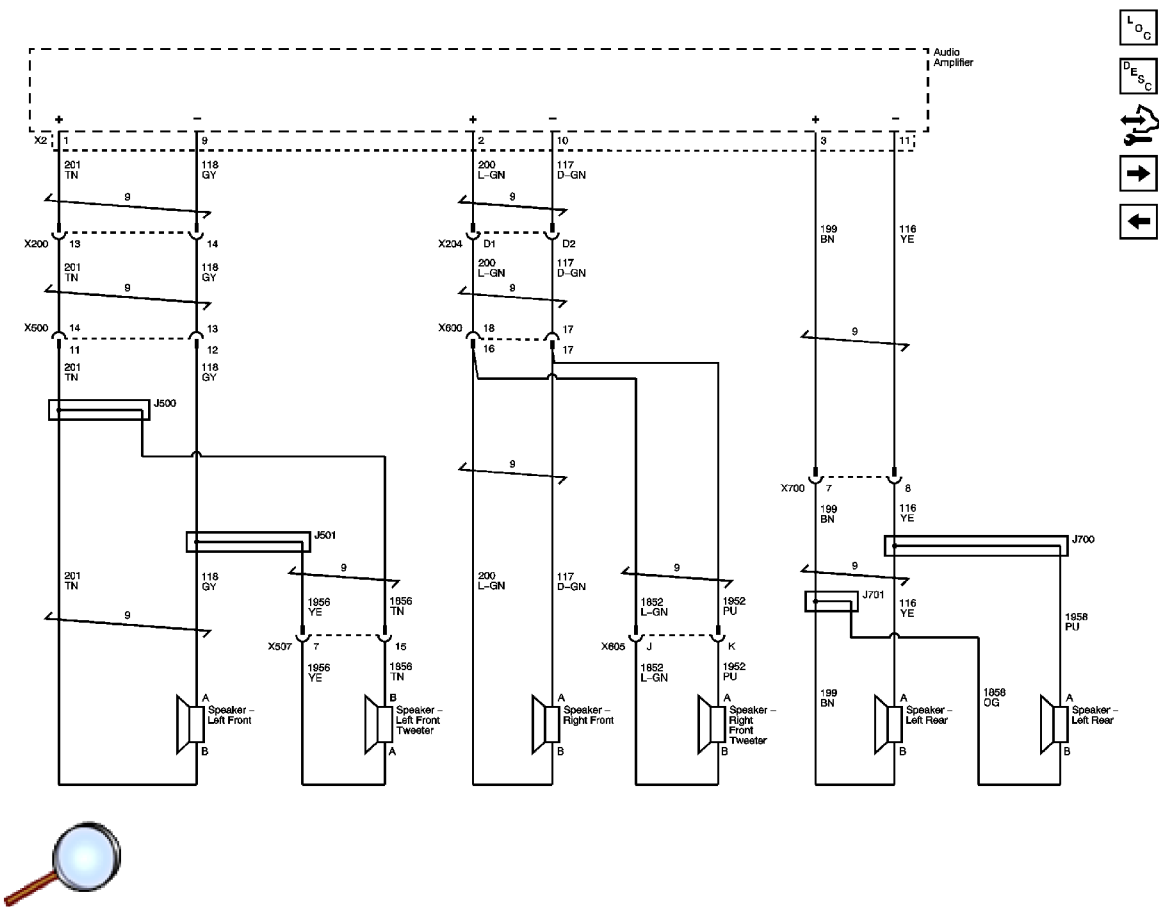


# Speakers (UW6)

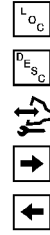
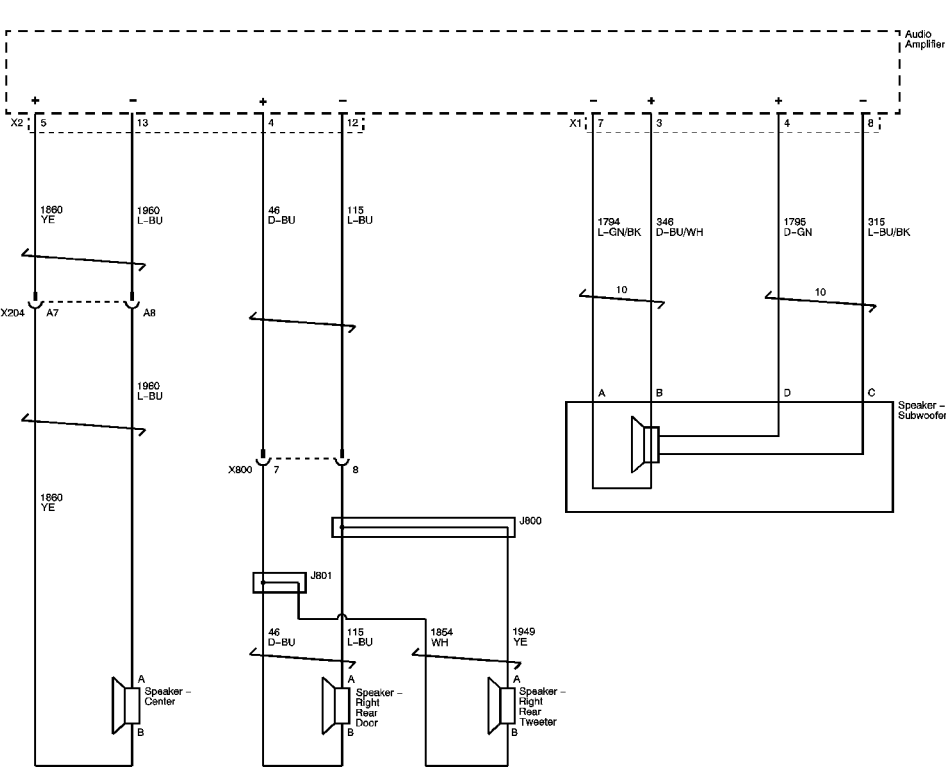




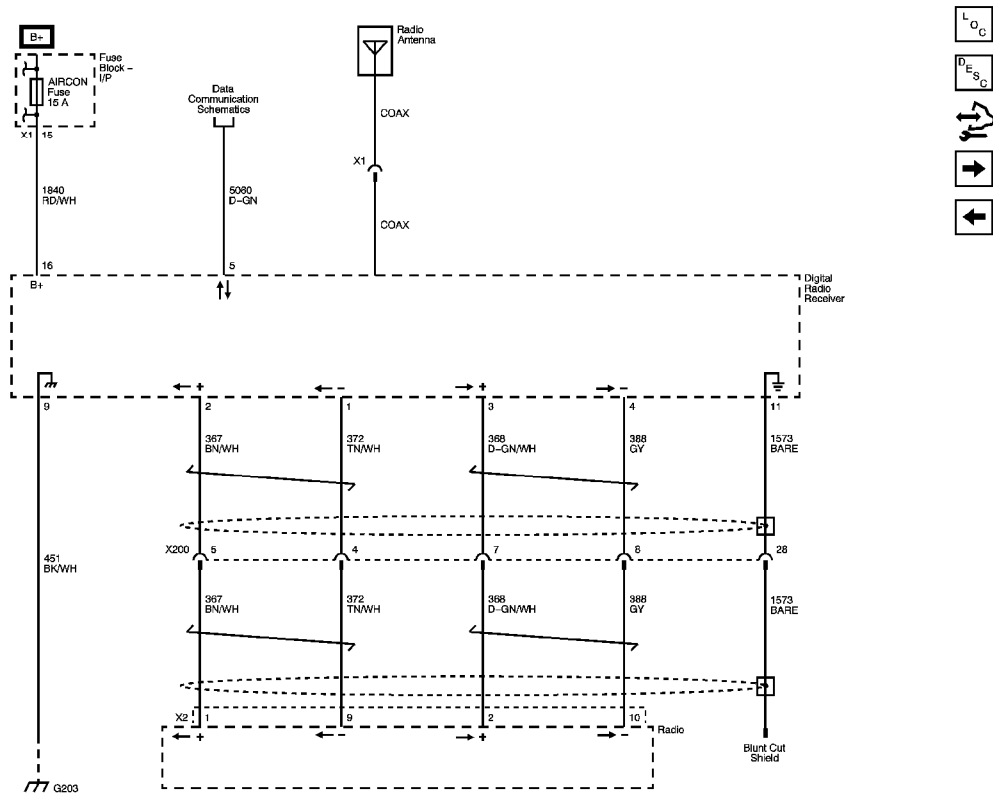
# Speakers (U61) 1 of 2

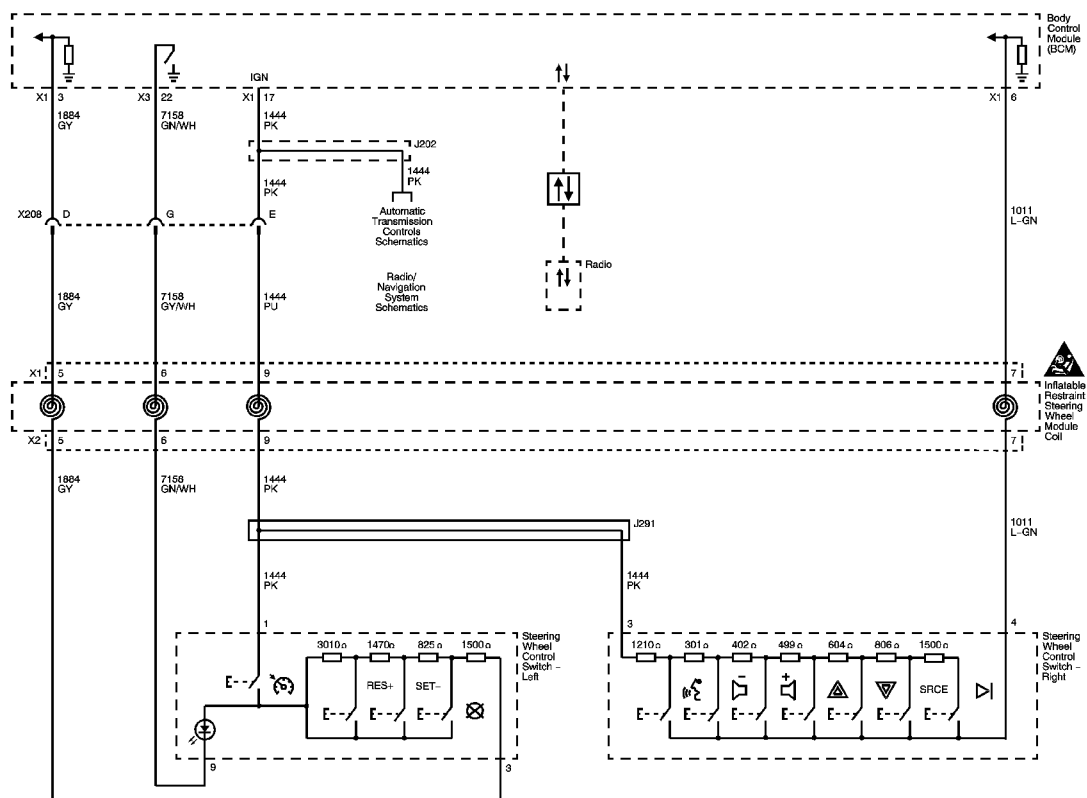


# Speakers (U61) 2 of 2



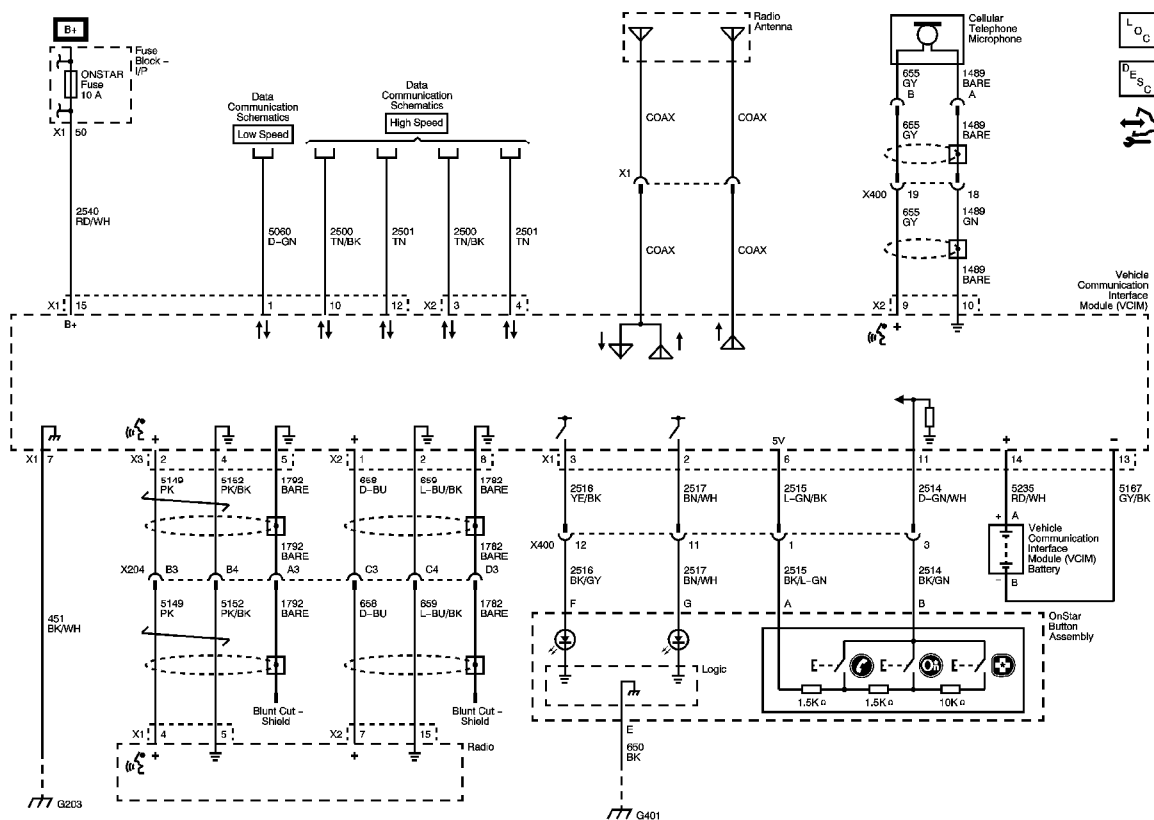
# Digital Radio



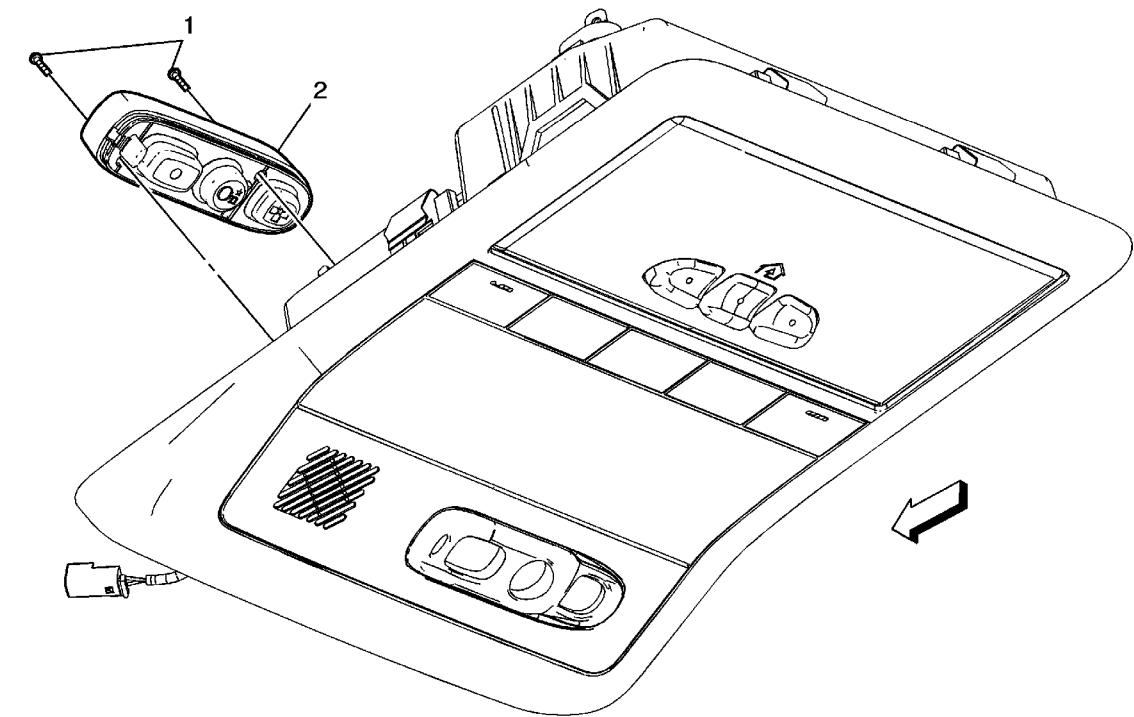


# OnStar Schematics

## OnStar

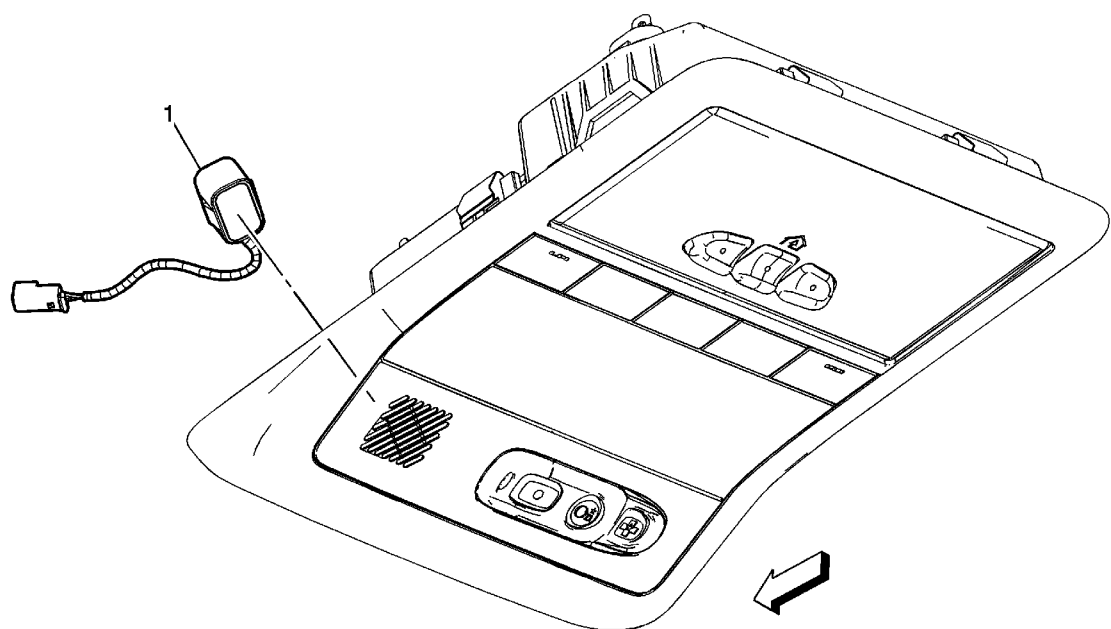


# OnStar Button Assembly Replacement



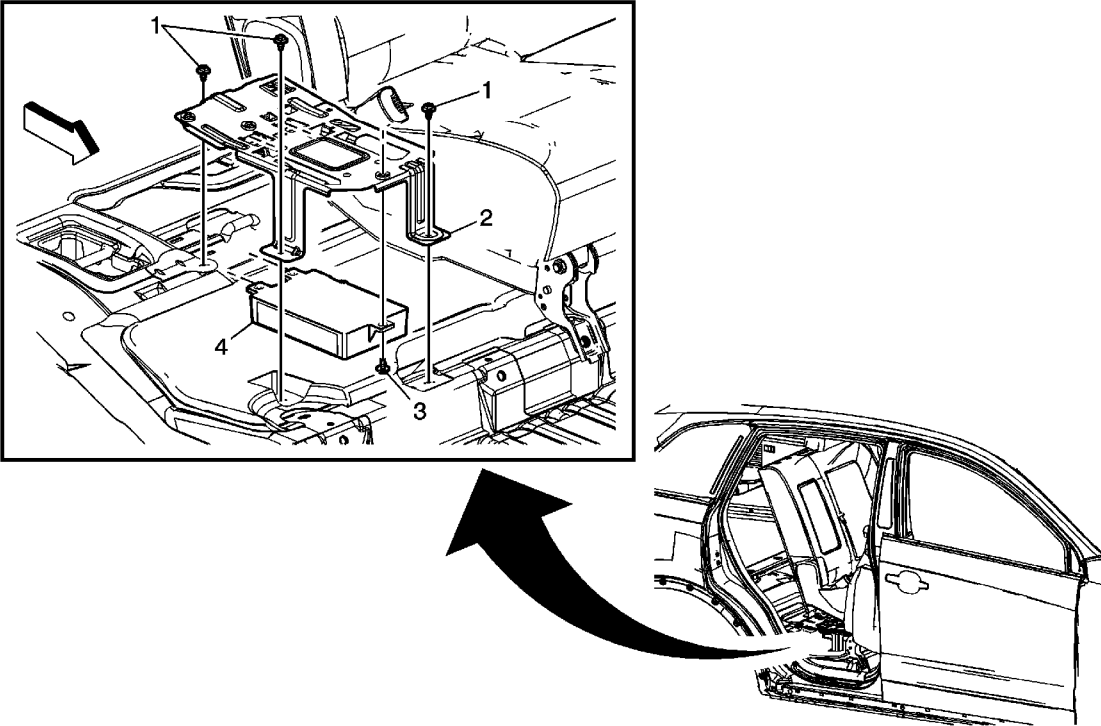
Callout	Component Name
<b>Preliminary Procedure</b>	
Remove the roof console assembly. Refer to <a href="#">Roof Console Replacement</a> .	
1	Communication Center Call Switch Screw (Qty: 2)  <b>Caution:</b> Refer to <a href="#">Fastener Caution</a> in the Preface section.  <b>Tighten</b> 2 N·m (18 lb in)
2	Communication Center Call Switch Assembly  <b>Procedure</b>  1. Disconnect the electrical connection. 2. Reconfigure the OnStar System. Refer to <a href="#">Control Module References</a> .

# Mobile Telephone Microphone Replacement



Callout	Component Name
<b>Preliminary Procedure</b>	
Remove the roof console assembly. Refer to <a href="#">Roof Console Replacement</a> .	
1	<div>Communication Interface Mobile Microphone Assembly</div> <div><b>Procedure</b></div> <div>Disconnect the electrical connection.</div>

# Communication Interface Module Replacement



Callout	Component Name
<b>Preliminary Procedure</b>	
Remove the right rear seat. Refer to <a href="#">Rear Seat Replacement</a> .	
1	Communication Interface Module Bracket Bolt (Qty: 3)  <b>Caution:</b> Refer to <a href="#">Fastener Caution</a> in the Preface section.  <b>Tighten</b> 10 N·m (89 lb in)
2	Communication Interface Module Bracket
3	Communication Interface Module Bolt  <b>Caution:</b> Refer to <a href="#">Fastener Caution</a> in the Preface section.  <b>Tighten</b> 10 N·m (89 lb in)
	Communication Interface Module

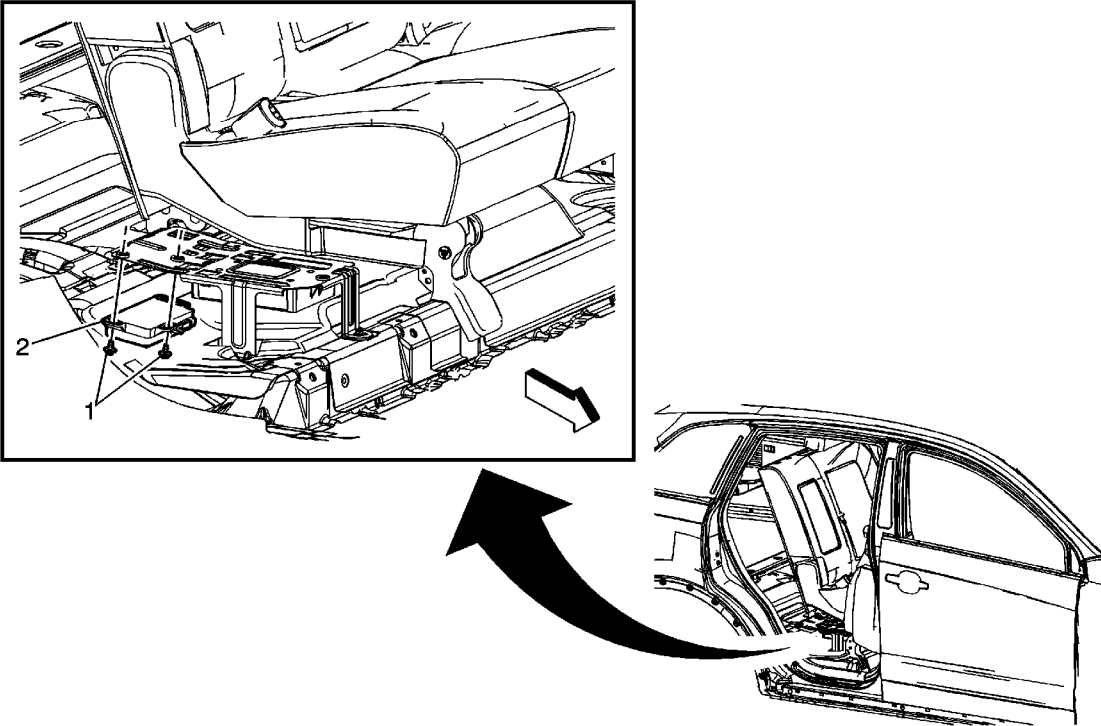
1. Disconnect the electrical connectors.
2. Reprogram the communication interface module if replaced. Refer to [Control Module References](#).
3. When replacing the VCIM, record the 11-digit electronic serial number (ESN) and the 10-digit station identification (STID) number from the label on the new VCIM.

**Tip**

4

- The vehicle communication interface module (VCIM) has a specific set of unique numbers that tie the module to each vehicle. These numbers, the 10-digit station identification and the 11-digit electronic serial number, are used by the National Cellular Network and OnStar® to identify the specific vehicle. Because these numbers are tied to the vehicle identification number of the vehicle, you must never exchange these parts with those of another vehicle.
- After replacing the vehicle communication interface module, you must reconfigure the OnStar® system. Failure to reconfigure the system will result in an additional customer visit for repair. In addition, pressing and holding the white dot button on the keypad will NOT reset this version of the OnStar® system. This action will cause a DTC to set.
- When replacing the vehicle communication module be sure to transfer Bluetooth Antenna, if equipped.

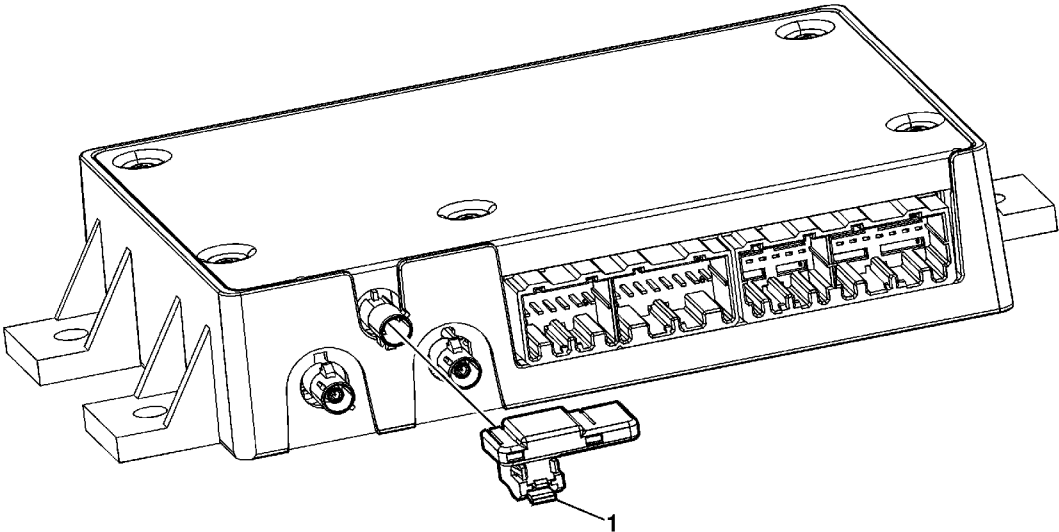
# Communication Interface Module Battery Replacement



Callout	Component Name
<b>Preliminary Procedure</b>	
Remove the right rear seat. Refer to <a href="#">Rear Seat Replacement</a> .	
1	<p>Communication Interface Module Battery Bolt (Qty: 2)</p> <p><b>Caution:</b> Refer to <a href="#">Fastener Caution</a> in the Preface section.</p> <p><b>Tighten</b> 10 N·m (89 lb in)</p>
	<p>Communication Interface Module Battery Assembly</p> <p><b>Procedure</b></p> <p>Disconnect the electrical connectors.</p> <p><b>Tip</b></p> <ul style="list-style-type: none"><li>• The vehicle communication interface module (VCIM) has a specific set of unique numbers that tie the module to each vehicle. These numbers, the 10-</li></ul>

2	<p>by the National Criminal Network and OnStar® to identify the specific vehicle. Because these numbers are tied to the vehicle identification number of the vehicle, you must never exchange these parts with those of another vehicle.</p> <ul style="list-style-type: none"><li>• Replacement of the back-up battery (BUB) does not require reconfiguration of the VCIM. If a trouble code is indicated before the battery is replaced, the DTC must be cleared following the installation of the new battery. The OnStar® system does not need to be reconfigured unless the VCIM is replaced.</li><li>• When the VCIM is replaced, the OnStar® system must be reconfigured. Failure to reconfigure the system will result in an additional customer visit for repair. In addition, pressing and holding the white dot button on the keypad will NOT reset this version of the OnStar® system. This action will cause a DTC to set.</li></ul>
---	---

# Wireless Communication Interface Antenna Replacement



Callout	Component Name
<b>Preliminary Procedure</b>	
Remove the communication interface module. Refer to <a href="#">Communication Interface Module Replacement</a>	
1	<div>Wireless Communication Interface Antenna Bluetooth Module</div> <div><b>Procedure</b></div> <div>Unsnap the Antenna from Communication Module.</div>

---

# Compact Disc Care and Cleaning

## Care of CDs

Handle CDs carefully. Store them in their original cases or other protective cases and away from direct sunlight and dust. The CD player scans the bottom surface of the disc. If the surface of a CD is damaged, such as cracked, broken, scratched, or wrinkled labeling, the CD will not play properly or not at all. If the surface of a CD is soiled, take a soft, lint free cloth or dampen a clean, soft cloth in a mild, neutral detergent solution mixed with water, and clean it. Make sure the wiping process starts from the center to the edge. Do not touch the bottom side of a CD while handling it. This could damage the surface. Pick up CDs by grasping the outer edges or the edge of the hole and the outer edge.

## Care of the CD Player

The use of CD lens cleaners for CD players is not advised, due to the risk of contaminating the internal lens of the CD optics with lubricants.

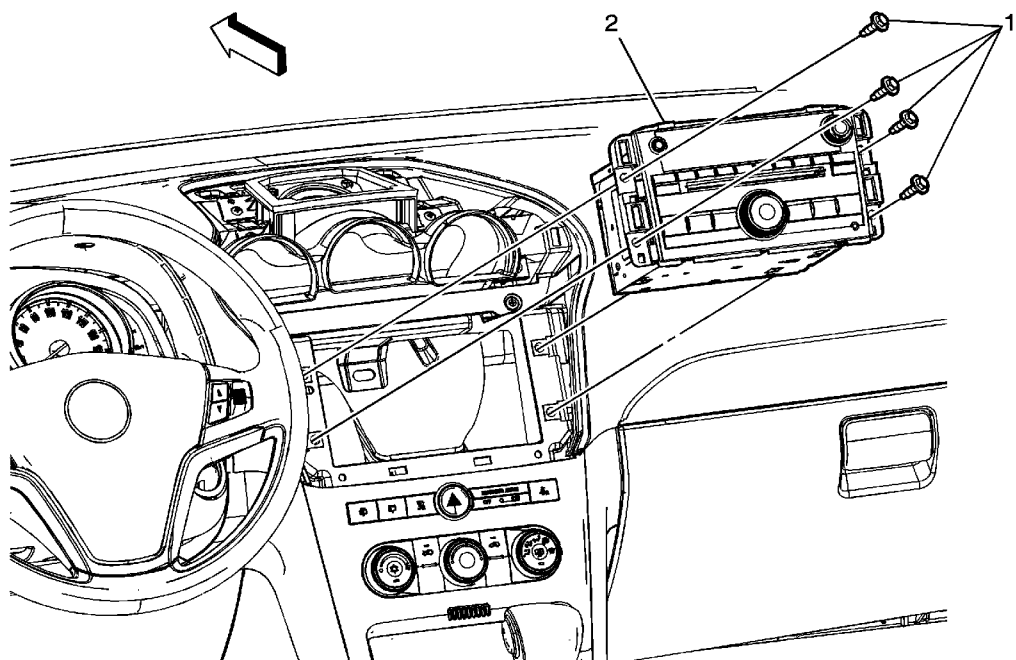
## Stuck CDs

Interrupting the battery power by pulling the fuse will sometimes release a stuck CD. If a CD is stuck, and removed, inspect it for warps, cracks, etc. If the CD is damaged, do not replace the radio.

## Labeling CDs

Paper labels can eventually warp and wrinkle, and this will cause the disc to jam inside the CD player. Try labeling the top of the discs with a soft magic marker instead.

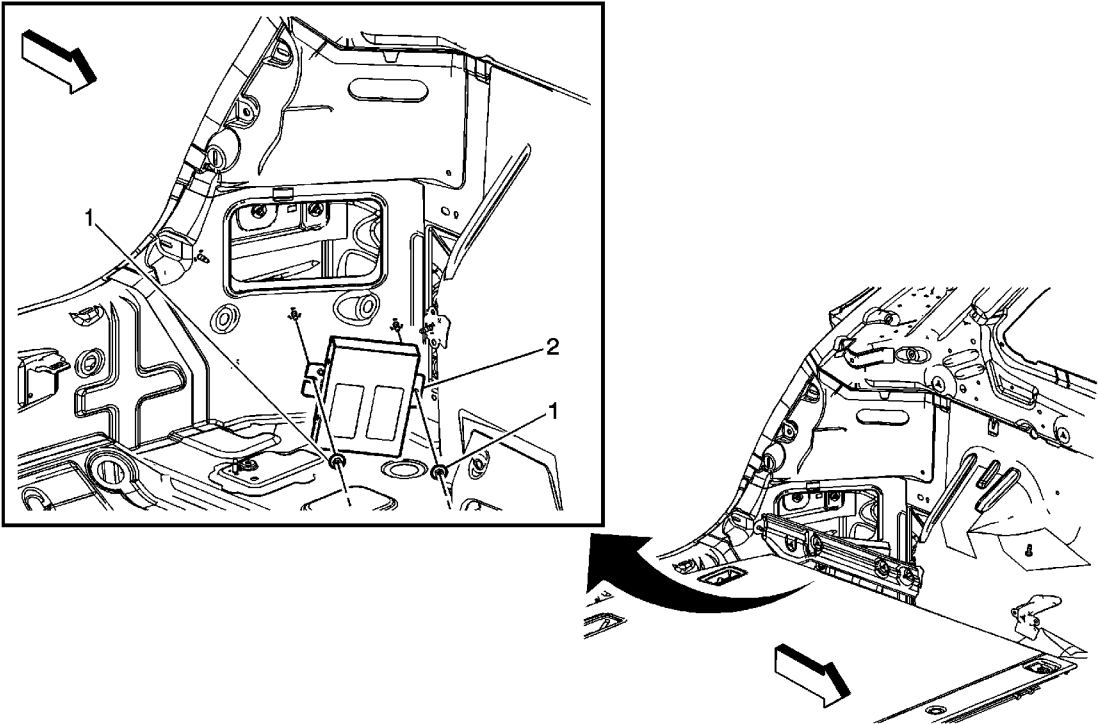
# Radio Replacement



Callout	Component Name
<b>Preliminary Procedure</b>	
Remove the instrument panel accessory bezel. Refer to <a href="#">Instrument Panel Accessory Bezel Replacement</a> .	
1	<p>Radio Screw (Qty: 4)</p> <p><b>Caution:</b> Refer to <a href="#">Fastener Caution</a> in the Preface section.</p> <p><b>Tighten</b> 2.5 N·m (22 lb in)</p>
2	<p>Radio Assembly</p> <p><b>Procedure</b></p> <ol style="list-style-type: none"><li>1. Disconnect the electrical connector.</li><li>2. Disconnect the antenna cable.</li><li>3. Reprogram the radio after replacement. Refer to <a href="#">Control Module References</a>.</li></ol> <p><b>Tip</b></p>

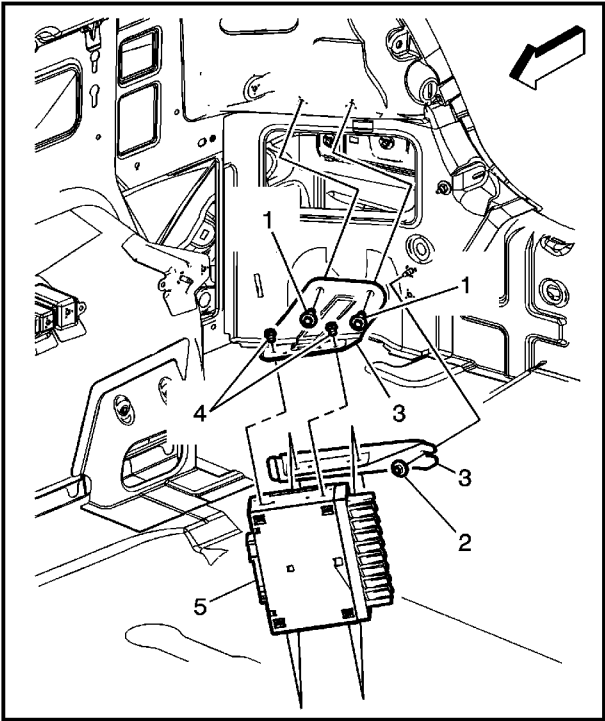
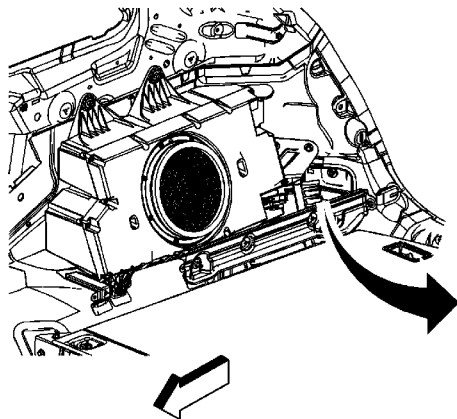
--	--

# Digital Radio Receiver Replacement



Callout	Component Name
<b>Preliminary Procedure</b>	
Remove the left rear quarter lower trim panel. Refer to <a href="#">Quarter Lower Rear Trim Panel Replacement</a> .	
1	Digital Radio Receiver Bracket Nut (Qty: 2)  <b>Caution:</b> Refer to <a href="#">Fastener Caution</a> in the Preface section.  <b>Tighten</b> 10 N·m (89 lb in)
2	Digital Radio Receiver Bracket Assembly  <b>Procedure</b>  Disconnect the electrical connection.

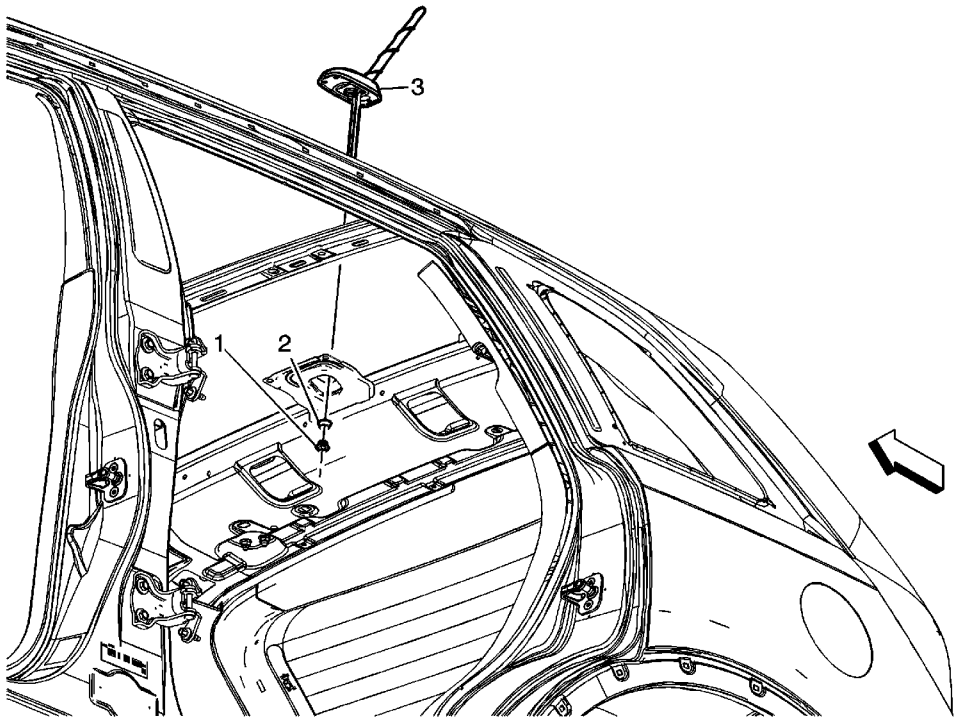
# Radio Speaker Amplifier Replacement



Callout	Component Name
<b>Preliminary Procedure</b>	
Remove the rear quarter trim panel. Refer to <a href="#">Quarter Lower Rear Trim Panel Replacement</a> .	
1	Radio Speaker Amplifier Bolt (Qty: 2)  <b>Caution:</b> Refer to <a href="#">Fastener Caution</a> in the Preface section.  <b>Tighten</b> 10 N·m (89 lb in)
2	Radio Speaker Amplifier Nut  <b>Caution:</b> Refer to <a href="#">Fastener Caution</a> in the Preface section.  <b>Tighten</b> 10 N·m (89 lb in)
3	Radio Speaker Amplifier Bracket Assembly  <b>Tip</b> Amplifier bracket is a two piece assembly.

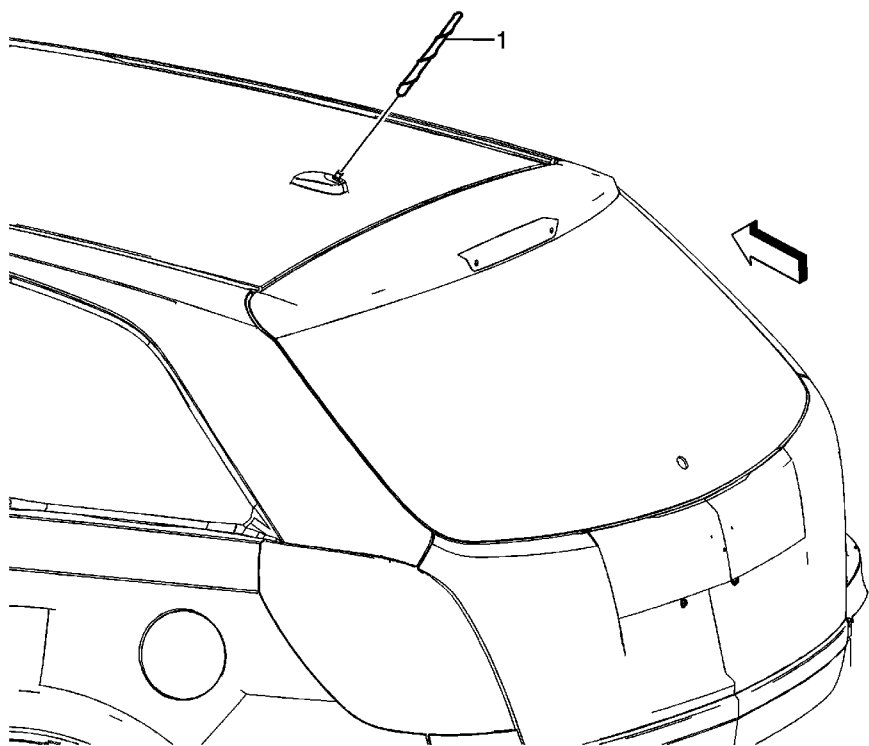
4	<p><b>Caution:</b> Refer to <a href="#">Fastener Caution</a> in the Preface section.</p> <p><b>Tighten</b> 3 N·m (27 lb in)</p>
5	<p>Radio Speaker Amplifier Assembly</p> <p><b>Procedure</b></p> <p>Disconnect the electrical connectors.</p>

# Radio Antenna Base Replacement



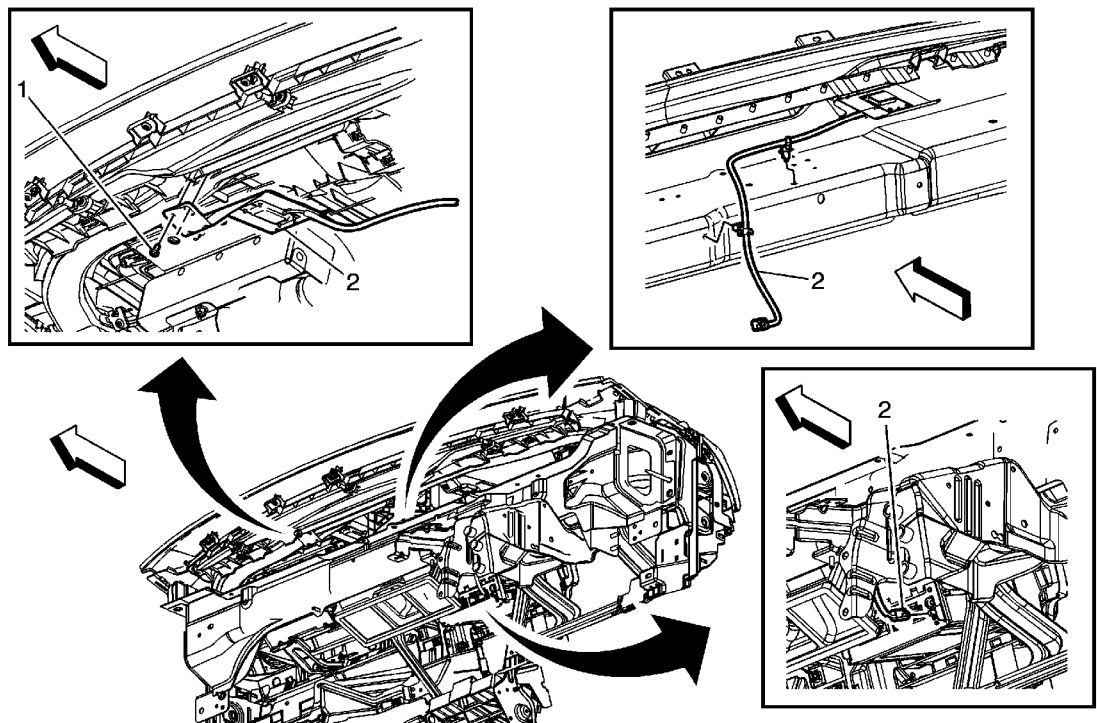
Callout	Component Name
<b>Preliminary Procedure</b>	
Lower the rear of the headliner. Refer to <a href="#">Headlining Trim Panel Replacement</a> .	
1	Radio Antenna Base Nut  <b>Caution:</b> Refer to <a href="#">Fastener Caution</a> in the Preface section.  <b>Tighten</b> 9 N·m (80 lb in)
2	Radio Antenna Base Washer
3	Radio Antenna Base Assembly  <b>Procedure</b>  Disconnect the electrical connections.

# Digital Radio Antenna Replacement



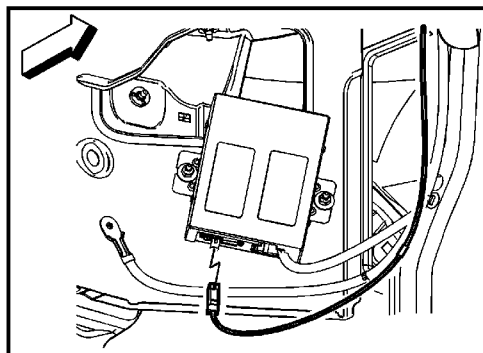
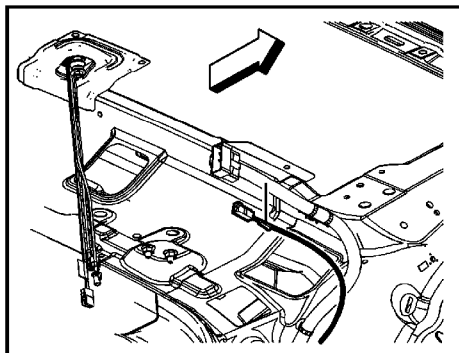
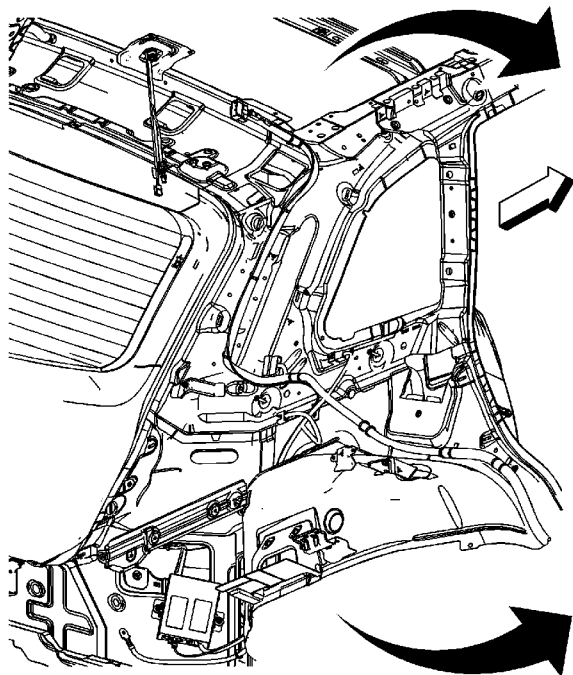
Callout	Component Name
1	Radio Antenna <b>Procedure</b> Screw the radio antenna into the radio antenna base assembly.

# Electronic Navigation Antenna Replacement



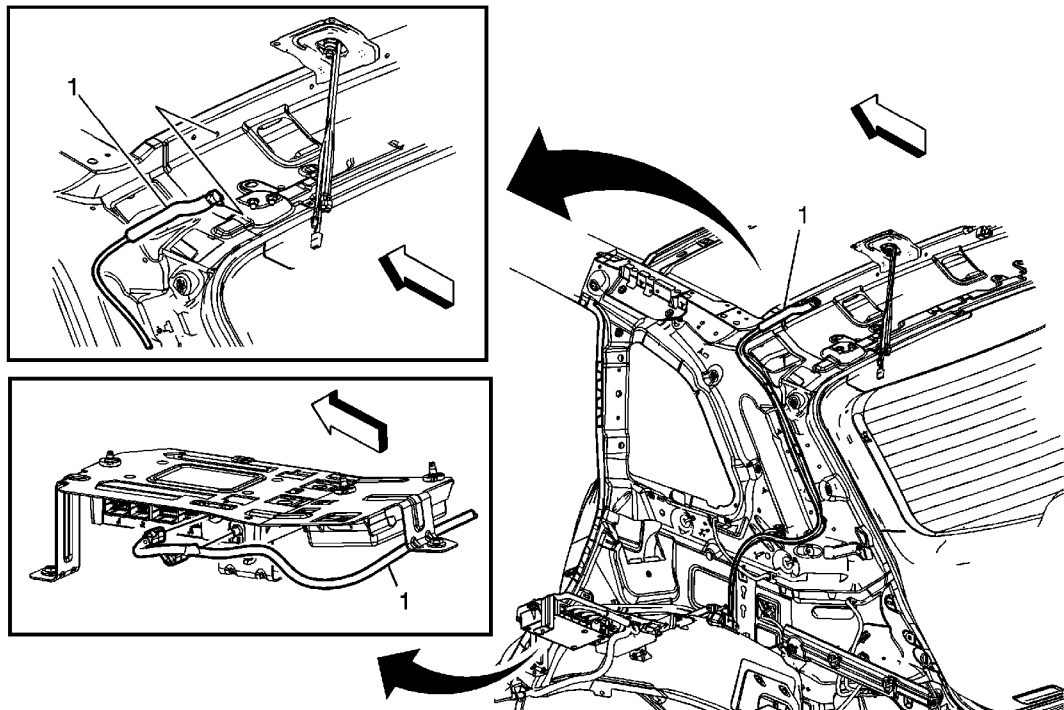
Callout	Component Name
<b>Preliminary Procedure</b>	
Remove the instrument panel trim panel. Refer to <a href="#">Instrument Panel Trim Panel Replacement</a> .	
1	Navigation Antenna Mount Plate Screw  <b>Caution:</b> Refer to <a href="#">Fastener Caution</a> in the Preface section.  <b>Tighten</b> 2.5 N·m (22 lb in)
2	Navigation Antenna Assembly

# Digital Radio Antenna Cable Replacement



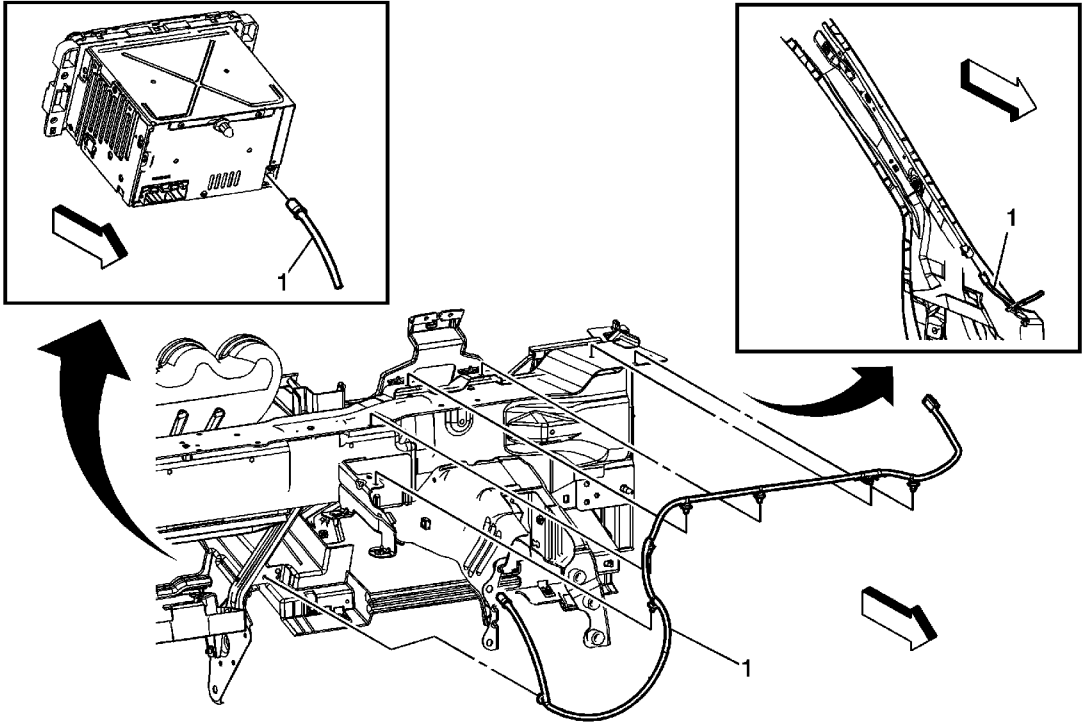
Callout	Component Name
<div data-bbox="147 1021 1409 1073"><b>Preliminary Procedures</b></div> <div data-bbox="183 1114 1409 1308"><ol style="list-style-type: none"><li>1. Remove the left rear quarter upper trim panel. Refer to <a href="#">Quarter Upper Trim Panel Replacement</a>.</li><li>2. Remove the left rear quarter lower trim panel. Refer to <a href="#">Quarter Lower Rear Trim Panel Replacement</a>.</li><li>3. Lower the rear of the headliner as needed. Refer to <a href="#">Headlining Trim Panel Replacement</a>.</li></ol></div>	
1	<div data-bbox="263 1313 1409 1354">Digital Radio Antenna Cable Assembly</div> <div data-bbox="263 1354 1409 1443"><b>Procedure</b></div> <div data-bbox="298 1478 1409 1600"><ol style="list-style-type: none"><li>1. Disconnect the electrical connectors at each end of the cable.</li><li>2. If the cable is taped into the wiring harness then cut the ends off the old cable and route the new cable close to the old one as possible using tie straps to secure the new cable.</li></ol></div>

# Mobile Telephone Antenna Coaxial Cable Replacement



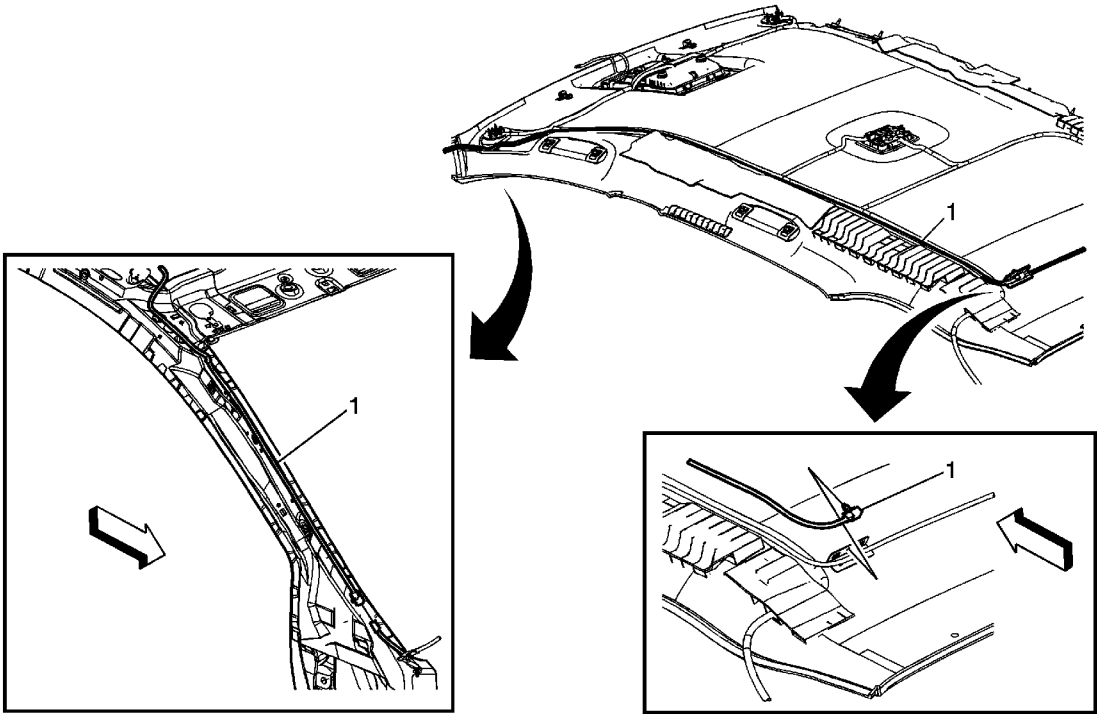
Callout	Component Name
<div data-bbox="151 1021 1411 1077"><b>Preliminary Procedures</b></div> <div data-bbox="183 1114 1352 1378"><ol style="list-style-type: none"><li>1. Remove the right rear quarter upper trim panel. Refer to <a href="#">Quarter Upper Trim Panel Replacement</a>.</li><li>2. Remove the right rear quarter lower trim panel. Refer to <a href="#">Quarter Lower Rear Trim Panel Replacement</a>.</li><li>3. Remove the right rear front floor panel carpet as needed. Refer to <a href="#">Front Floor Panel Carpet Replacement</a>.</li><li>4. Lower the rear of the headliner as needed. Refer to <a href="#">Headlining Trim Panel Replacement</a>.</li></ol></div>	
1	<div data-bbox="263 1378 1411 1434">Mobile Telephone Control Module Cable Assembly</div> <div data-bbox="263 1434 1411 1677"><div data-bbox="263 1434 1411 1507"><b>Procedure</b></div><div data-bbox="297 1539 1411 1677"><ol style="list-style-type: none"><li>1. Disconnect the electrical connectors at each end of the cable.</li><li>2. If the mobile telephone (m/tel) cable is taped into the wiring harness then cut the ends off the old cable and route the new m/tel cable close to the old one as possible using tie straps to secure the new cable.</li></ol></div></div>

# Antenna Cable Replacement



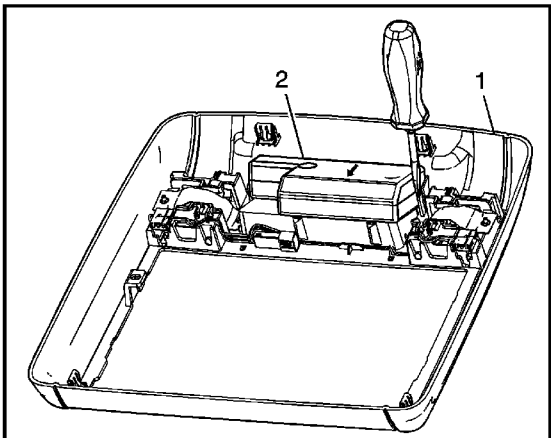
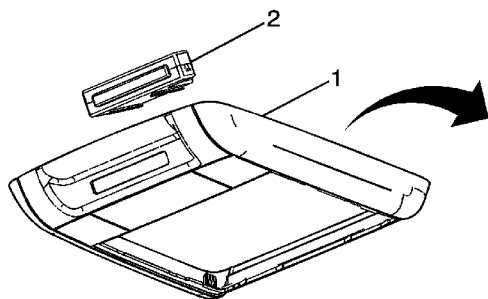
Callout	Component Name
<b>Preliminary Procedures</b>  1. Remove the left windshield pillar garnish molding. Refer to <a href="#">Windshield Pillar Garnish Molding Replacement</a> . 2. Remove the instrument panel trim panel. Refer to <a href="#">Instrument Panel Trim Panel Replacement</a> .	
1	Radio Antenna Cable Assembly  <b>Procedure</b>  Disconnect the electrical connectors at each end of the cable.

# Radio Antenna Cable Extension Cable Replacement



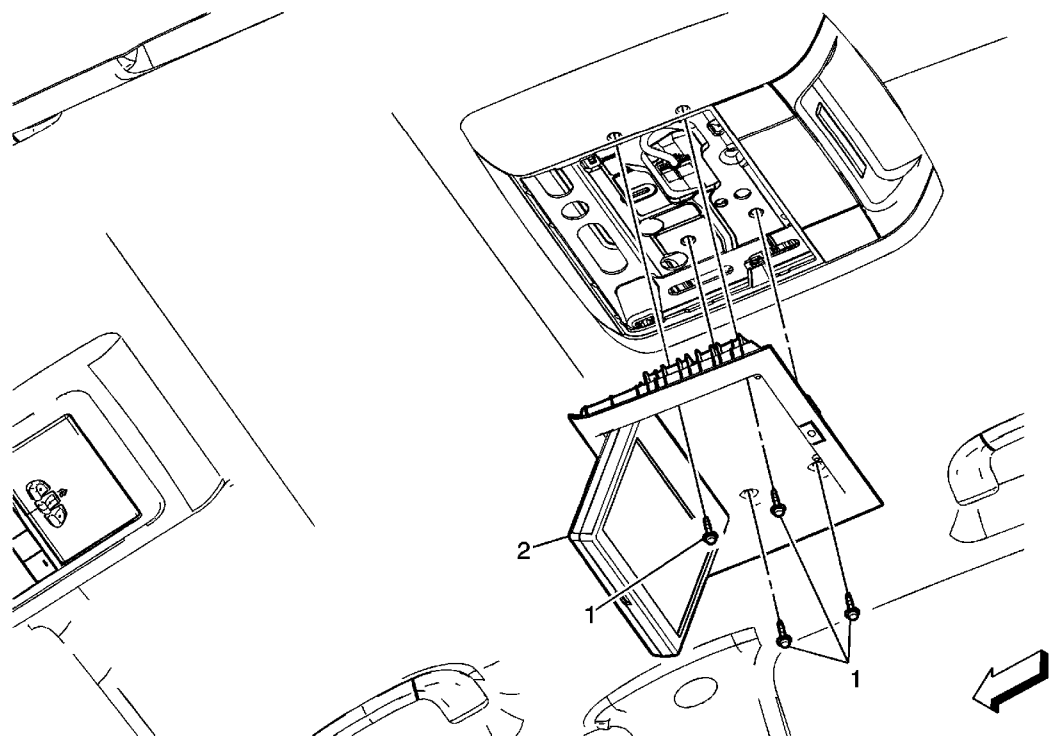
Callout	Component Name
<b>Preliminary Procedures</b>	
<ol style="list-style-type: none"><li>1. Remove the left windshield pillar garnish molding. Refer to <a href="#">Windshield Pillar Garnish Molding Replacement</a>.</li><li>2. Lower the left side of the headliner as needed. Refer to <a href="#">Headlining Trim Panel Replacement</a>.</li></ol>	
1	<p>Radio Antenna Cable Extension Cable Assembly</p> <p><b>Procedure</b></p> <p>Disconnect the electrical connectors at each end of the cable.</p>

# Audio System Transceiver Module Replacement



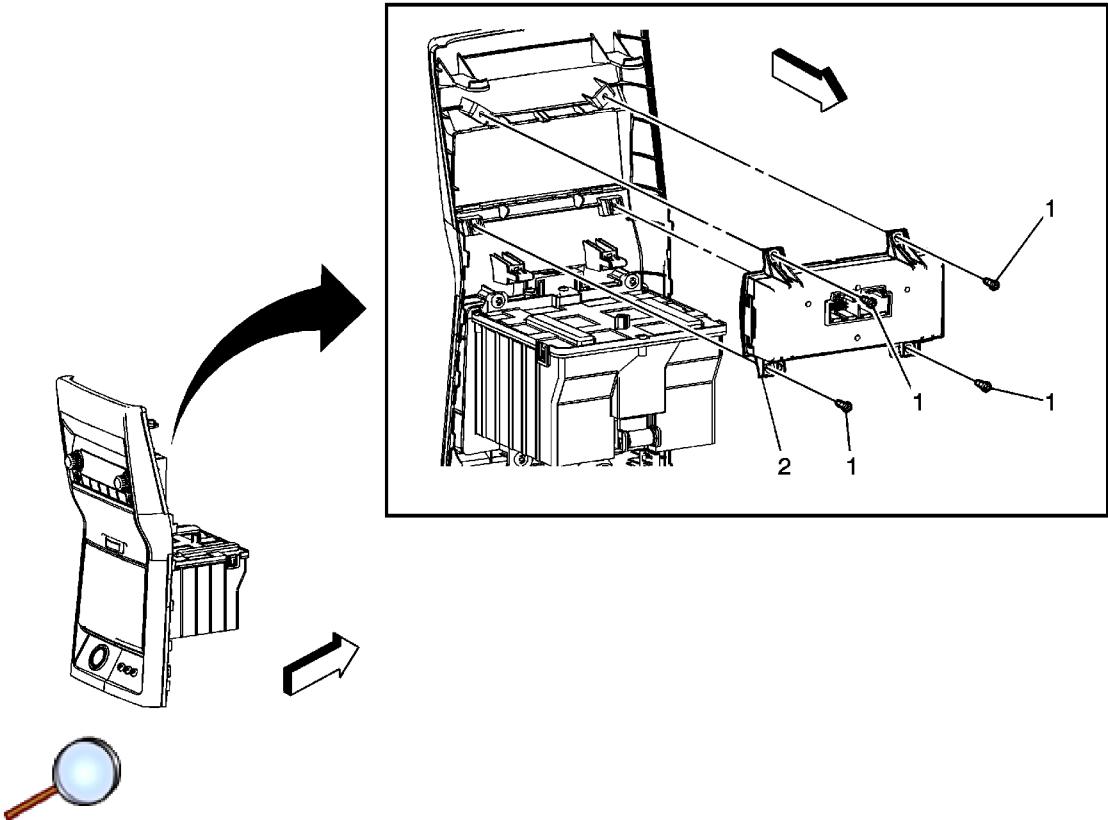
Callout	Component Name
<b>Preliminary Procedure</b>	
Remove the video display assembly. Refer to <a href="#">Video Display Replacement</a> .	
1	Roof Console Assembly Refer to <a href="#">Roof Rear Console Replacement</a> .
2	Video Disc Player Remote Control and Headphone Transceiver Assembly  <b>Procedure</b>  1. Disconnect the electrical connector. 2. Use a flat bladed tool to release the tabs that secure the module to the roof console on each side of the module. 3. Slide forward and up to release from the roof console.

# Video Display Replacement



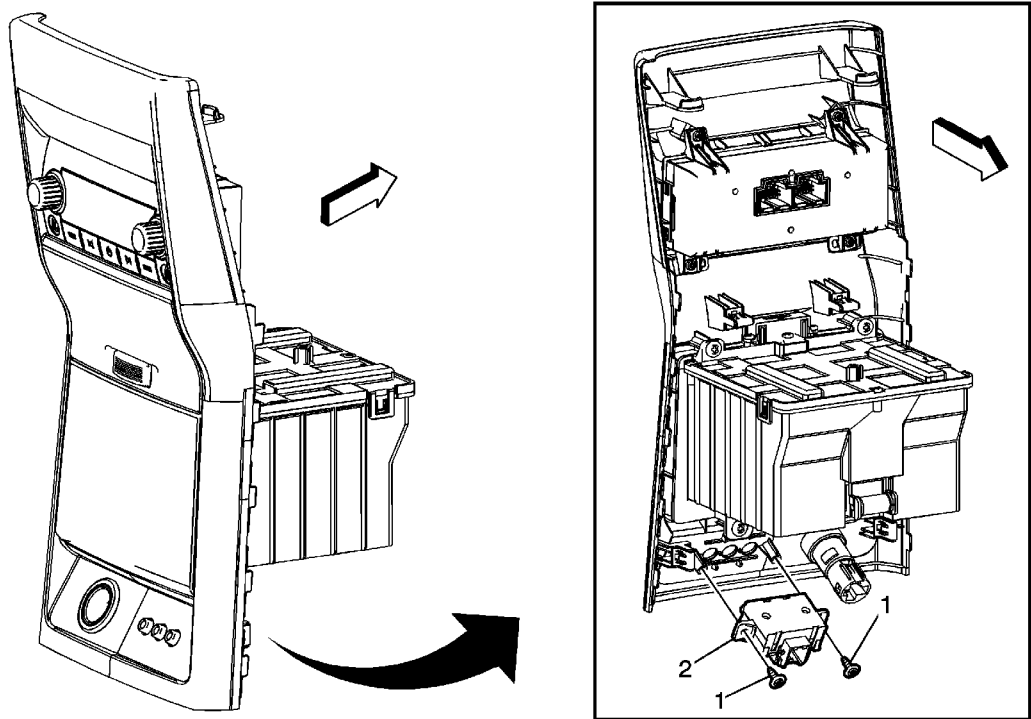
Callout	Component Name
1	<p>Video Display Assembly Screws (Qty: 4)</p> <p><b>Caution:</b> Refer to <a href="#">Fastener Caution</a> in the Preface section.</p> <p><b>Tighten</b> 2.5 N·m ( 22 lb in)</p> <p><b>Procedure</b></p> <p>Make sure that all 4 washers on the 4 mounting screws are accounted for. If any washers are off the screw and loose, discard to prevent a rattle. The washers were required only for assembly plant installation, and can be used if still on the screw or they can be discarded.</p>
2	<p>Video Display Assembly</p> <p><b>Procedure</b></p> <ol style="list-style-type: none"><li>1. Pull down to disengage the retainer clip and remove from the vehicle.</li><li>2. Disconnect the electrical connector.</li></ol>

# Rear SeatAudio Control Replacement



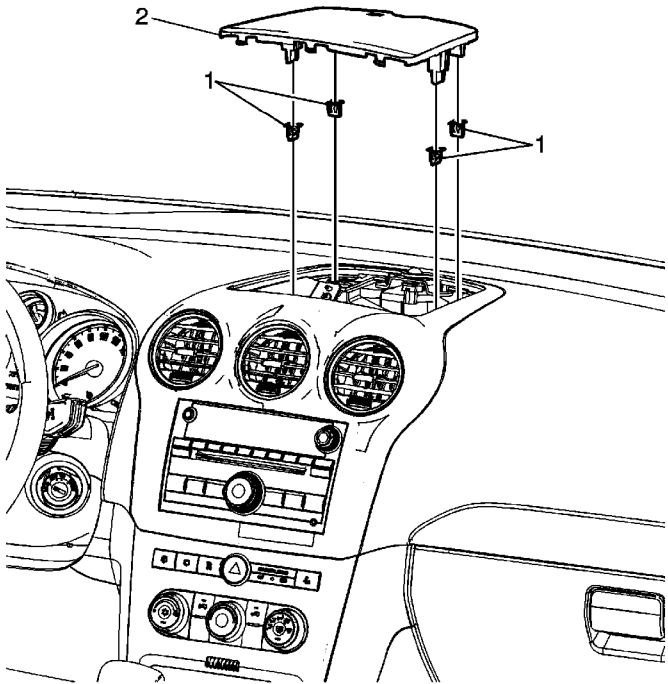
Callout	Component Name
<b>Preliminary Procedure</b>	
Remove the front floor console rear cover. Refer to <a href="#">Front Floor Console Rear Cover Replacement</a> .	
1	AM/FM Stereo and Clock and Compact Disc Player Radio Control Assembly Screw (Qty: 4)  <b>Caution:</b> Refer to <a href="#">Fastener Caution</a> in the Preface section.  <b>Tighten</b> 2.5 N·m (22 lb in)
2	AM/FM Stereo and Clock and Compact Disc Player Radio Control Assembly

# Audio/Video Disc Player Adapter Replacement



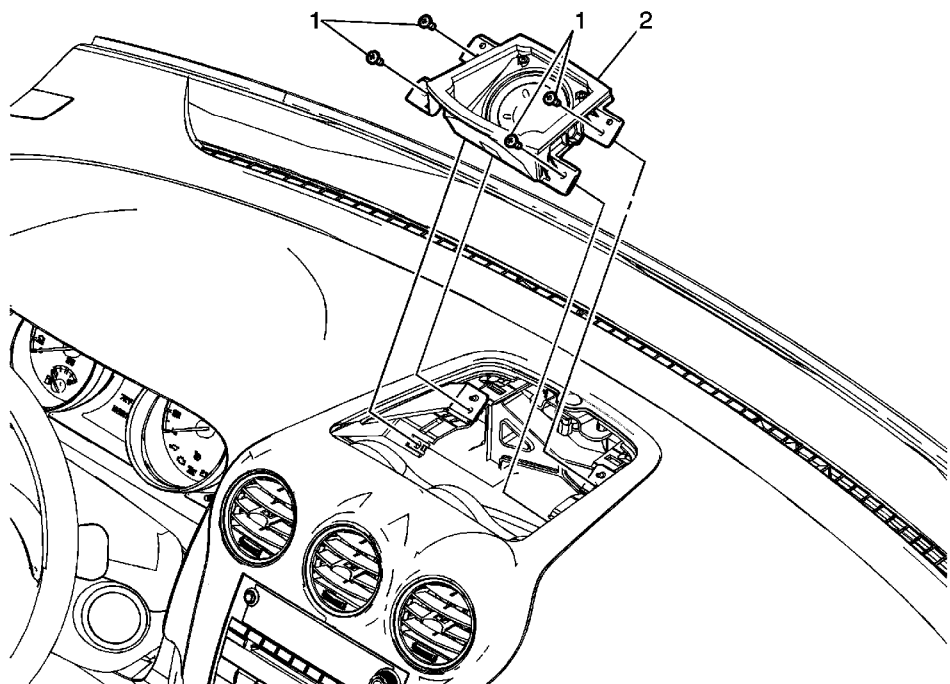
Callout	Component Name
<b>Preliminary Procedure</b>	
Remove the front floor console rear cover. Refer to <a href="#">Front Floor Console Rear Cover Replacement</a> .	
1	Audio/Video Disc Player Adapter Screw (Qty: 2)  <b>Caution:</b> Refer to <a href="#">Fastener Caution</a> in the Preface section.  <b>Tighten</b> 2 N·m (18 lb in)
2	Audio/Video Disc Player Adapter Assembly

# Radio Front Speaker Grille Replacement



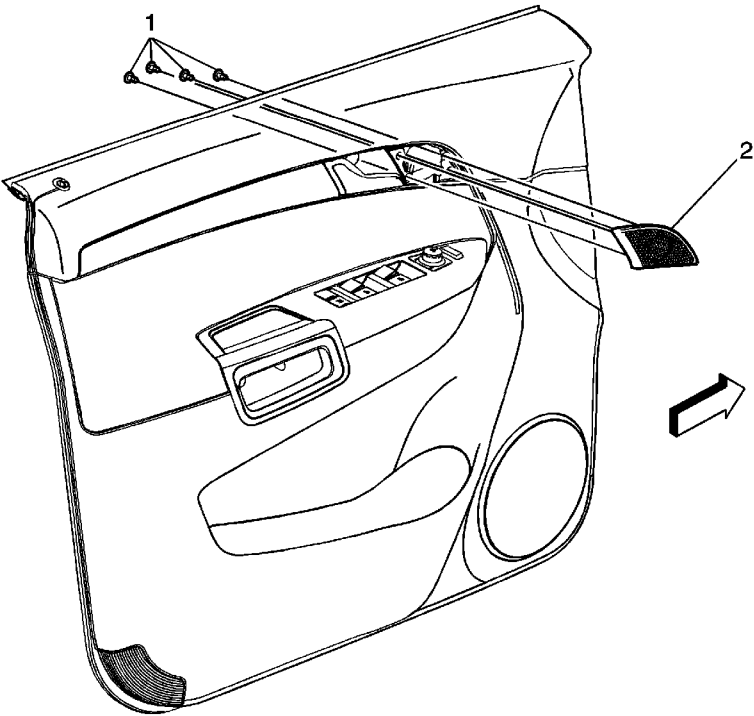
Callout	Component Name
1	Radio Front Speaker Grille Retainer (Qty: 4)
2	Radio Front Speaker Grille Assembly
	<b>Procedure</b>
	Use a plastic flat bladed tool to remove the grille assembly.

# Radio Front Speaker Replacement



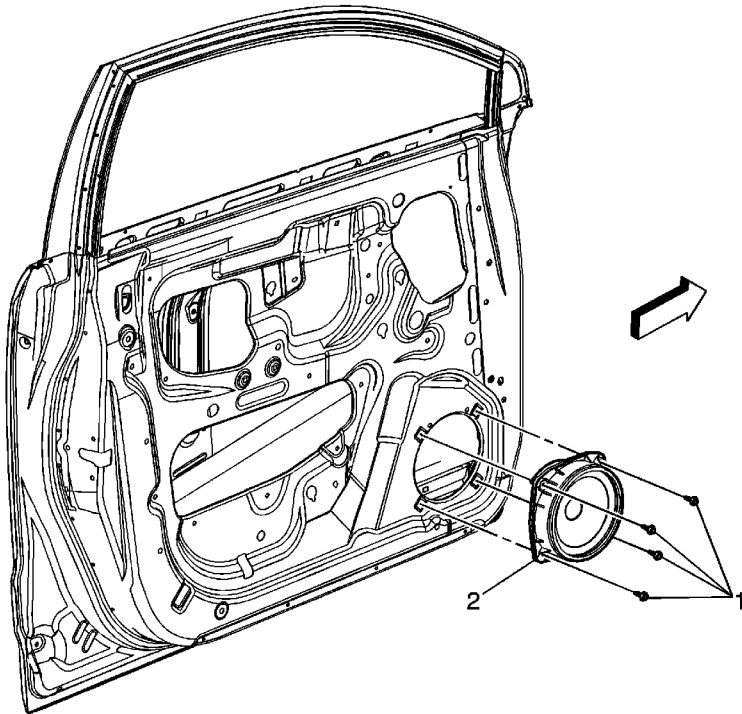
Callout	Component Name
<b>Preliminary Procedure</b>	
Remove the radio front speaker grille. Refer to <a href="#">Radio Front Speaker Grille Replacement</a> .	
1	<div>Radio Front Speaker Screw (Qty: 4)</div> <div><b>Caution:</b> Refer to <a href="#">Fastener Caution</a> in the Preface section.</div> <div><b>Tighten</b> 3 N·m (27 lb in)</div>
2	<div>Radio Front Speaker Assembly</div> <div><b>Procedure</b></div> <div>Disconnect the electrical connector.</div>

# Radio Front Side Door Upper Speaker Replacement



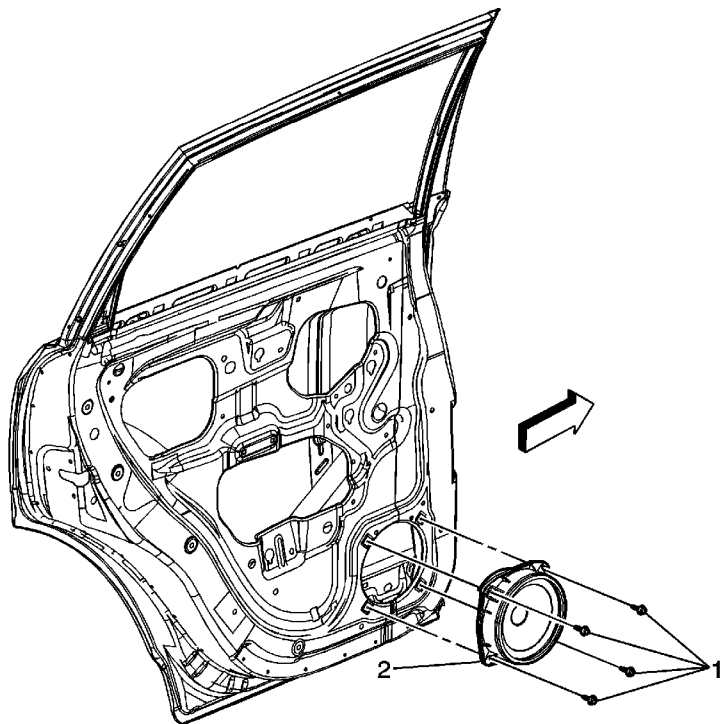
Callout	Component Name
<b>Preliminary Procedure</b>	
Remove the front side door trim panel. Refer to <a href="#">Front Side Door Trim Panel Replacement</a> .	
1	Radio Front Side Door Upper Speaker Screw (Qty 4)  <b>Caution:</b> Refer to <a href="#">Fastener Caution</a> in the Preface section.  <b>Tighten</b> 2.5 N·m (22 lb in)
2	Radio Front Side Door Upper Speaker Assembly  <b>Procedure</b>  Disconnect the electrical connectors.

# Radio Front Side Door Lower Speaker Replacement



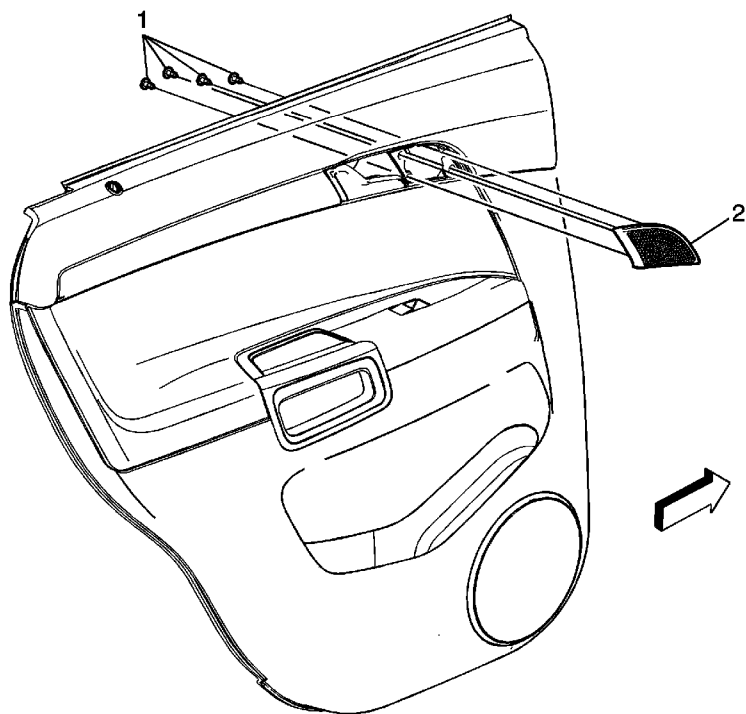
Callout	Component Name
<b>Preliminary Procedure</b>	
Remove the front side door trim panel. Refer to <a href="#">Front Side Door Trim Panel Replacement</a> .	
1	Radio Front Side Door Lower Speaker Screw (Qty 4)  <b>Caution:</b> Refer to <a href="#">Fastener Caution</a> in the Preface section.  <b>Tighten</b> 2.5 N·m (22 lb in)
2	Radio Front Side Door Lower Speaker Assembly  <b>Procedure</b>  Disconnect the electrical connectors.

# Radio Rear Side Door Lower Speaker Replacement



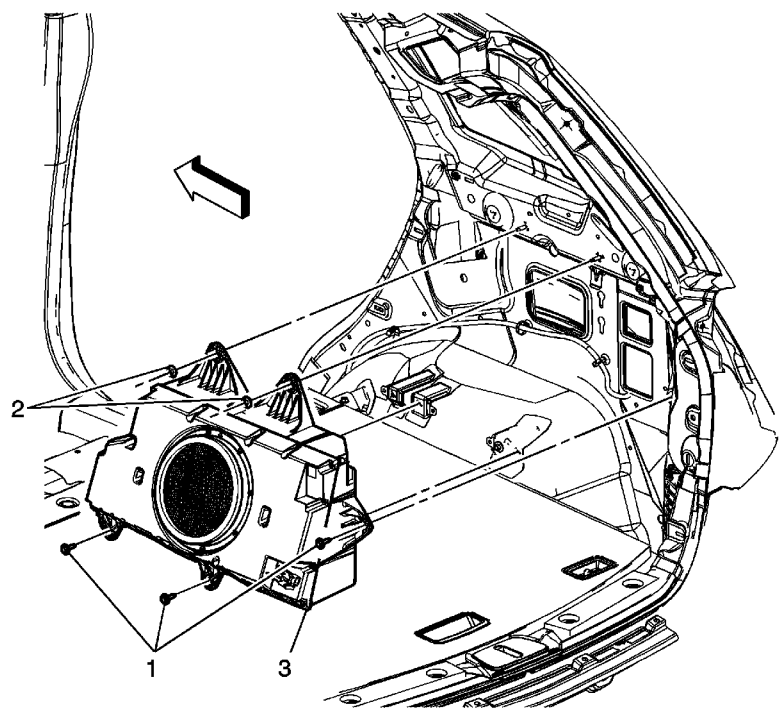
Callout	Component Name
<b>Preliminary Procedure</b>	
Remove the rear side door trim panel. Refer to <a href="#">Rear Side Door Trim Panel Replacement</a> .	
1	Radio Rear Side Door Lower Speaker Screw (Qty 4)  <b>Caution:</b> Refer to <a href="#">Fastener Caution</a> in the Preface section.  <b>Tighten</b> 2.5 N·m (22 lb in)
2	Radio Rear Side Door Lower Speaker Assembly  <b>Procedure</b>  Disconnect the electrical connectors.

# Radio Rear Side Door Upper Speaker Replacement



Callout	Component Name
<b>Preliminary Procedure</b>	
Remove the rear side door trim panel. Refer to <a href="#">Rear Side Door Trim Panel Replacement</a> .	
1	Radio Rear Side Door Upper Speaker Screw (Qty 4)  <b>Caution:</b> Refer to <a href="#">Fastener Caution</a> in the Preface section.  <b>Tighten</b> 2.5 N·m (22 lb in)
2	Radio Rear Side Door Upper Speaker Assembly  <b>Procedure</b>  Disconnect the electrical connectors.

# Radio Rear Compartment Speaker Replacement



Callout	Component Name
<b>Preliminary Procedure</b>	
Remove the rear wheelhouse trim panel. Refer to <a href="#">Quarter Lower Rear Trim Panel Replacement</a> .	
1	Radio Rear Compartment Speaker Bolt (Qty: 3)  <b>Caution:</b> Refer to <a href="#">Fastener Caution</a> in the Preface section.  <b>Tighten</b> 10 N·m (89 lb in)
2	Radio Rear Compartment Speaker Nut (Qty: 2)  <b>Caution:</b> Refer to <a href="#">Fastener Caution</a> in the Preface section.  <b>Tighten</b> 10 N·m (89 lb in)
3	Radio Rear Compartment Speaker Assembly

Disconnect the electrical connection.